

# vetrina



## vetrina: chromatic thinking

L'effetto energizzante e la carica positiva del colore: 72 gradienti cromatici in vetro lucido e 32 con finitura opaca per trovare l'esatta tonalità immaginata.

Nella collezione Vetrina ogni colore nasce da un preciso riferimento Pantone®, il sistema cromatico universalmente riconosciuto e strumento indispensabile per architetti, designer e professionisti. Il piccolo formato delle tessere, 10x10 mm, e la ricca gamma dei colori a cui si aggiungono i Mix e le Sfumature, creano moduli dall'attraente tattilità, per disegnare nuovi spazi con la profondità del vetro, all'insegna della massima libertà espressiva.

The energizing effect and positive charge of colour. The selected range of 72 chromatic values in shiny glass and 32 featuring opaque finishes makes it possible to find the exact tonality imagined. Each colour is based on a precise reference to the Pantone® system, the universally recognized chromatic standard that serves as an indispensable tool for architects, designers and professionals. The small sizes of the chips (10x10 mm) and the rich array of colours create a module with a seductive tactile charm for designing new spaces with the profundity of glass and an unlimited creative freedom.

Die Lebendigkeit und positive Ausstrahlung der Farbe: Glasmosaik mit 72 Farbtönen in Glanzoptik und 32 in Mattoptik zur Verwirklichung individueller Farbvorstellungen. Bei der Kollektion Vetrina beziehen sich die einzelnen Farben auf das weltweit anerkannte Farbsystem Pantone®, das für die Arbeit von Architekten, Designern und Fachkräften aus der Branche unentbehrlich ist. Das Kleinformate 10x10 mm der Mosaiksteine und die reiche Auswahl an Farben, die individuelle Mischungen und Farbverläufe ermöglichen, erzeugen Module mit ansprechender Haptik für innovative Raumgestaltungen mit dem Tiefeneffekt des Glases, bei denen der Phantasie keine Grenzen gesetzt sind.

L'énergie et la charge positive de la couleur : 72 nuances en verre poli et 32 avec une finition mate pour trouver exactement la tonalité imaginée. Dans la collection Vetrina, chaque couleur repose sur une référence Pantone® bien précise, le nuancier universel et l'outil indispensable pour les architectes, les designers et les professionnels. Le mini format des tesselles – 10x10 mm – et la grande palette de couleurs adjointe des mélanges et nuances, mettent en scène des modules agréables à toucher pour façonner les nouveaux espaces avec la profondeur du verre, sous le signe de la plus grande liberté d'expression.

El efecto de generación de energía y la carga positiva del color: 72 gradientes cromáticos de vidrio brillante y 32 con acabado mate para hallar exactamente la tonalidad imaginada. En la colección Vetrina cada color nace de una referencia precisa del Pantone®, el sistema cromatico universalmente reconocido e instrumento indispensable para arquitectos, diseñadores y demás profesionales. El pequeño formato de las teselas, de 10 x 10 mm, y la rica gama de colores a la que se agregan las mezclas y los matices, crean módulos de atractivo carácter táctil, para trazar nuevos espacios con la profundidad del vidrio, dando rienda suelta a la máxima libertad expresiva.

Эффект, придающий энергию и позитивный заряд цвета: 72 цветовых нюанса и 32 с матовой отделкой позволяют точно найти необходимый вам оттенок. В коллекции Vetrina каждый цвет имеет точную отсылку к шкале Pantone® - признанной во всем мире системе цветов, являющейся незаменимым рабочим инструментом для архитекторов, дизайнеров и профессионалов. Небольшой формат кусочков, 10x10 мм, и богатый цветовой ассортимент, к которому присоединяются также Смеси и Нюансы, создают модули с привлекательным осязательным ощущением для оформления новых пространств, характеризующихся глубиной стекла и полной выразительной свободой.



+ 92

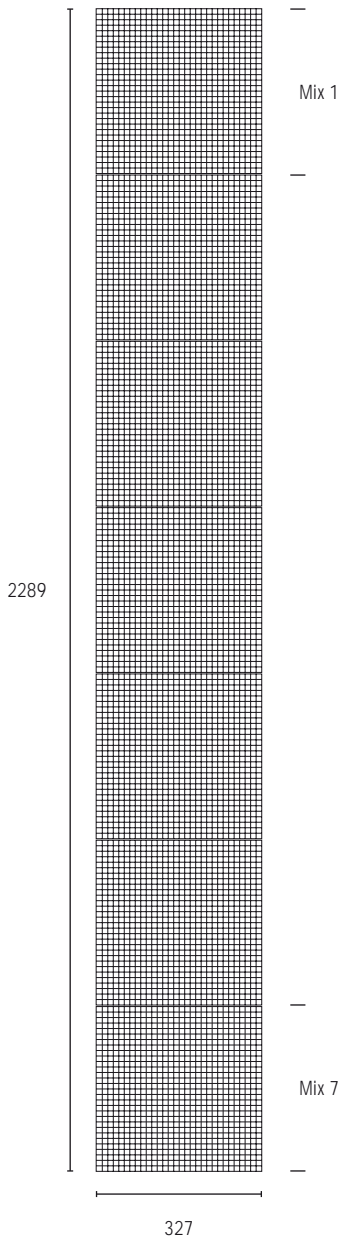








sfumature lucide / glossy shade



dimensioni foglio / sheet size  
 Abmessungen Bogen / dimensions feuille  
 tamaño de la hoja / размеры листа  
 327x327 mm / 12<sup>3/4</sup>"x 12<sup>3/4</sup>"


dimensioni tessera / chip size  
 Abmessungen Mosaikstein  
 dimensions tesselle / tamaño de la tesela  
 размеры кусочка  
 10x10x4 mm / 7/16"x 7/16"x 5/16"

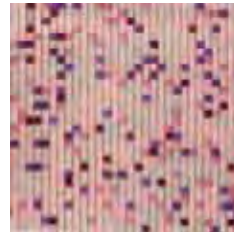
dimensioni modulo / module size  
 Abmessungen Modul / dimensions module  
 tamaño del módulo / размеры модуля  
 327x2289 mm / 12<sup>3/4</sup>"x 90<sup>1/8</sup>"  
 0,75 mq / 8,07 Sq ft

numero fogli modulo / number of module  
 sheets / Anzahl Bögen pro Modul / nombre  
 de feuilles module / número de hojas del  
 módulo / количество листов в модуле  
 7



VE.0532 Porpora G **P 220 MD**

Neutro CX.S000   
 Lilla CX.S017 



VE.0551 Porpora G Mix 1

VG.0402  
 VG.0454  
 VG.0455  
 VG.0456  
 VG.0446  
 VG.0447  
 VG.0448

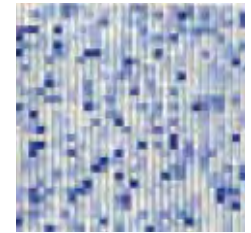


VE.0553 Porpora G Mix 7



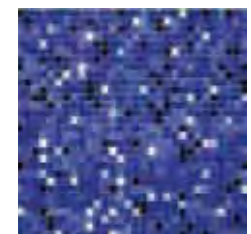
VE.0525 Zaffiro G **P 220 MD**

Neutro CX.S000   
 Avio CX.S011 



VE.0569 Zaffiro G Mix 1

VG.0435  
 VG.0413  
 VG.0401  
 VG.0436  
 VG.0443  
 VG.0442  
 VG.0438  
 VG.0441



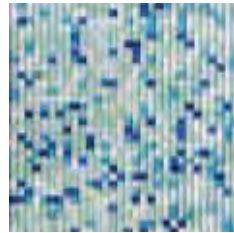
VE.0571 Zaffiro G Mix 7

vetrinamosaici

sfumature lucide / glossy shade

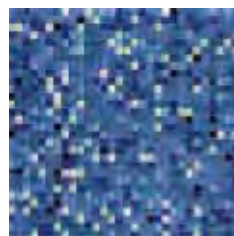


VE.0536 Marea G **P 220 MD**



VE.0539 Marea G Mix 1

- VG.0413
- VG.0401
- VG.0414
- VG.0432
- VG.0431
- VG.0430
- VG.0429
- VG.0437
- VG.0438

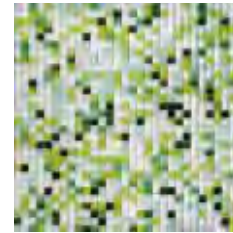


VE.0541 Marea G Mix 7

Neutro CX.S000   
Grigioverde CX.S005 

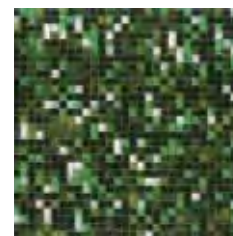


VE.0537 Muschio G **P 220 MD**



VE.0560 Muschio G Mix 1

- VG.0401
- VG.0414
- VG.0428
- VG.0426
- VG.0419
- VG.0427
- VG.0423
- VG.0420
- VG.0421



VE.0562 Muschio G Mix 7

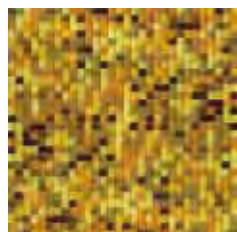
Neutro CX.S000   
Grigioverde CX.S005 

sfumature lucide / glossy shade



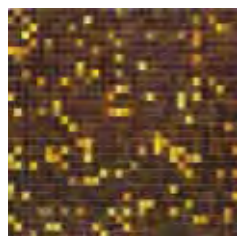
VE.0534 Ambra G P 220 MD

Neutro CX.S000   
 Senape CX.S022

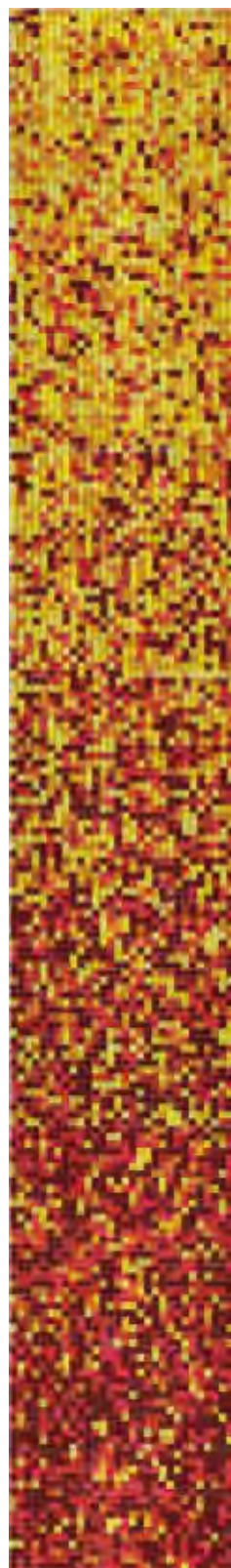


VE.0557 Ambra G Mix 1

- VG.0465
- VG.0463
- VG.0462
- VG.0466
- VG.0467
- VG.0468
- VG.0469
- VG.0470

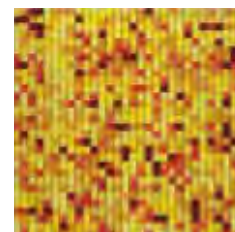


VE.0559 Ambra G Mix 7



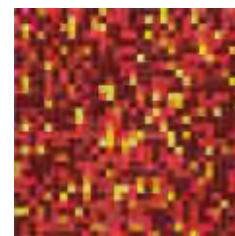
VE.0530 Sole G P 220 MD

Neutro CX.S000   
 Veneziano CX.S020



VE.0575 Sole G Mix 1

- VG.0465
- VG.0464
- VG.0463
- VG.0462
- VG.0461
- VG.0460
- VG.0459
- VG.0458
- VG.0457

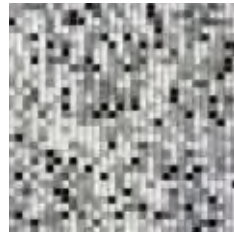


VE.0577 Sole G Mix 7

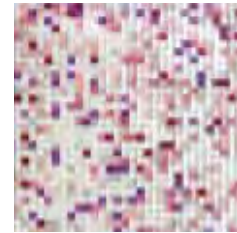
vetrinamosaici

sfumature lucide / glossy shade

sfumature opache / matt shade



VE.0542 Acciaio G Mix 1



VE.0548 Orchidea M Mix 1

- VG.0410
- VG.0411
- VG.0412
- VG.0401
- VG.0406
- VG.0405
- VG.0407
- VG.0408
- VG.0409


- VM.0473
- VM.0474
- VM.0498
- VM.0499
- VM.0495
- VM.0500
- VM.0496

VE.0533 Acciaio G P 220 MD

VE.0544 Acciaio G Mix 7

VE.0528 Orchidea M P 220 MD

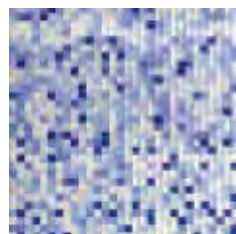
VE.0550 Orchidea M Mix 7

Neutro CX.S000   
Grigio CX.S003 

sfumature opache / matt shade

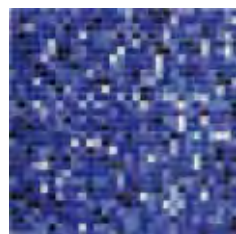


VE.0526 Cobalto M P 220 MD



VE.0554 Cobalto M Mix 1

- VM.0473
- VM.0479
- VM.0487
- VM.0488
- VM.0490
- VM.0491
- VM.0492
- VM.0493
- VM.0489



VE.0556 Cobalto M Mix 7



VE.0535 Smeraldo M P 220 MD



VE.0578 Smeraldo M Mix 1

- VM.0473
- VM.0479
- VM.0481
- VM.0482
- VM.0486
- VM.0489



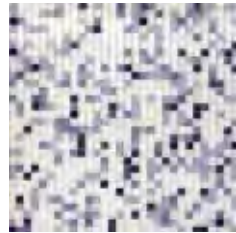
VE.0580 Smeraldo M Mix 7

vetrinamosaici

sfumature opache / matt shade



VE.0527 Cenere M [P. 220 MD](#)



VE.0545 Cenere M Mix 1

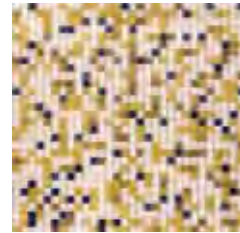
- VM.0473
- VM.0475
- VM.0477
- VM.0476
- VM.0489



VE.0547 Cenere M Mix 7

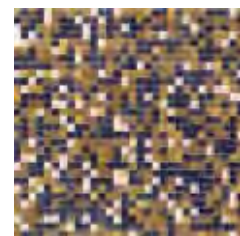


VE.0531 Senape M [P. 220 MD](#)



VE.0572 Senape M Mix 1

- VM.0474
- VM.0489
- VM.0501
- VM.0502
- VM.0503
- VM.0504



VE.0574 Senape M Mix 7

sfumature miste / combo shade



VE.0529 Biancoargento C **P 220 MD**



VE.0566 Biancoargento C Mix 7

- VM.0473
- VG.0401
- VG.0471



VE.0568 Biancoargento C Mix 7



VE.0538 Rosaoro C **P 220 MD**



VE.0563 Rosaoro C Mix 1

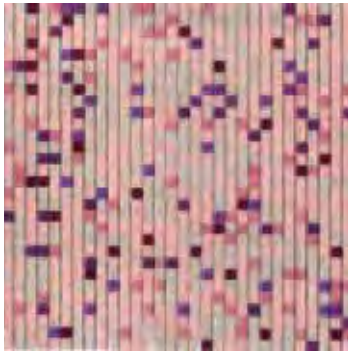
- VM.0498
- VG.0453
- VG.0472



VE.0565 Rosaoro C Mix 7

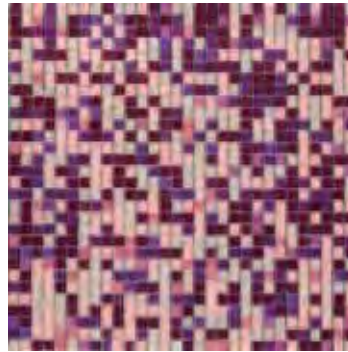


mix lucidi / glossy mix



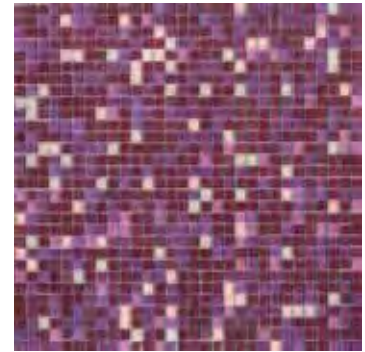
VE.0551 Porpora G Mix 1 P 270 MQ

- |         |         |                |
|---------|---------|----------------|
| VG.0402 | VG.0446 | Neutro CX.S000 |
| VG.0454 | VG.0447 | Lilla CX.S017  |
| VG.0455 | VG.0448 |                |



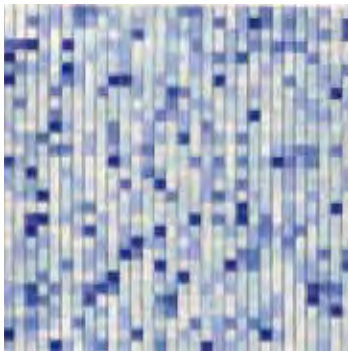
VE.0552 Porpora G Mix 4 P 270 MQ

- |         |         |                |
|---------|---------|----------------|
| VG.0402 | VG.0446 | Neutro CX.S000 |
| VG.0454 | VG.0447 | Lilla CX.S017  |
| VG.0455 | VG.0448 |                |
| VG.0456 |         |                |



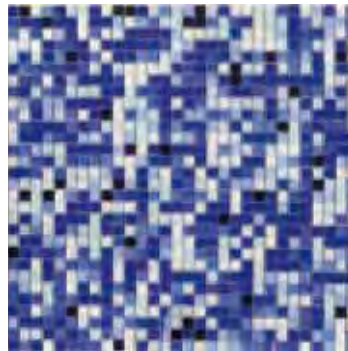
VE.0553 Porpora G Mix 7 P 270 MQ

- |         |         |                |
|---------|---------|----------------|
| VG.0402 | VG.0446 | Neutro CX.S000 |
| VG.0454 | VG.0447 | Viola CX.S018  |
| VG.0456 | VG.0448 |                |



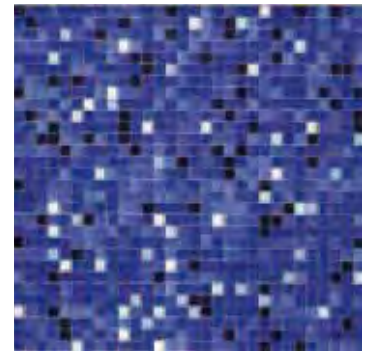
VE.0569 Zaffiro G Mix 1 P 270 MQ

- |         |         |                |
|---------|---------|----------------|
| VG.0435 | VG.0443 | Neutro CX.S000 |
| VG.0413 | VG.0442 | Neve CX.S001   |
| VG.0401 | VG.0441 |                |
| VG.0436 |         |                |



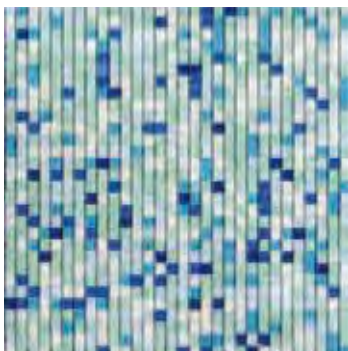
VE.0570 Zaffiro G Mix 4 P 270 MQ

- |         |         |                |
|---------|---------|----------------|
| VG.0435 | VG.0443 | Neutro CX.S000 |
| VG.0413 | VG.0442 | Avio CX.S011   |
| VG.0401 | VG.0438 |                |
| VG.0436 | VG.0441 |                |



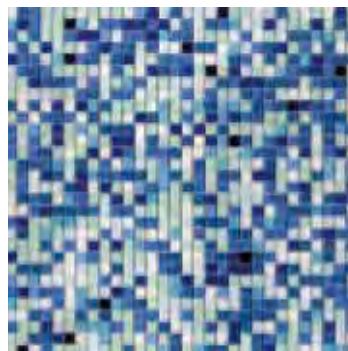
VE.0571 Zaffiro G Mix 7 P 270 MQ

- |         |         |                |
|---------|---------|----------------|
| VG.0435 | VG.0442 | Neutro CX.S000 |
| VG.0413 | VG.0438 | Oceano CX.S025 |
| VG.0401 | VG.0441 |                |
| VG.0443 |         |                |



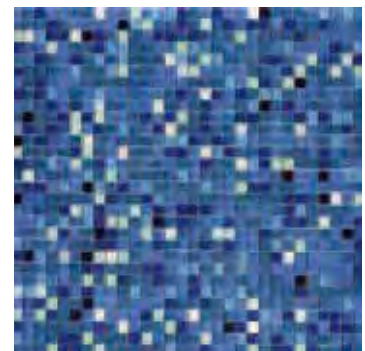
VE.0539 Marea G Mix 1 P 270 MQ

- |         |         |                     |
|---------|---------|---------------------|
| VG.0413 | VG.0432 | Neutro CX.S000      |
| VG.0401 | VG.0430 | Grigioverde CX.S005 |
| VG.0414 | VG.0429 |                     |



VE.0540 Marea G Mix 4 P 270 MQ

- |         |         |                |
|---------|---------|----------------|
| VG.0413 | VG.0430 | Neutro CX.S000 |
| VG.0401 | VG.0429 | Giada CX.S006  |
| VG.0414 | VG.0437 |                |
| VG.0432 | VG.0438 |                |
| VG.0431 |         |                |

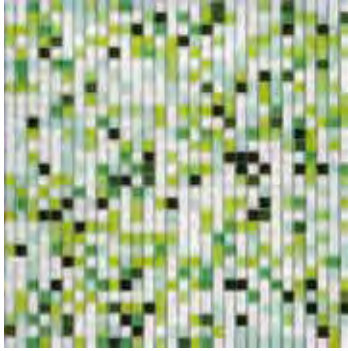


VE.0541 Marea G Mix 7 P 270 MQ

- |         |         |                |
|---------|---------|----------------|
| VG.0413 | VG.0430 | Neutro CX.S000 |
| VG.0401 | VG.0429 | Oceano CX.S025 |
| VG.0414 | VG.0437 |                |
| VG.0431 | VG.0438 |                |

vetrinamosaici

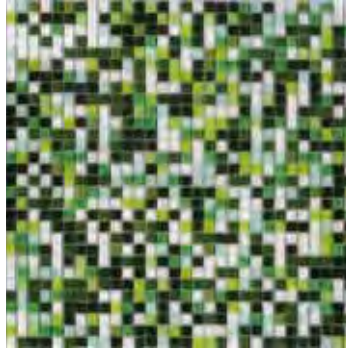
mix lucidi / glossy mix



VE.0560 Muschio G Mix 1

P 270 MQ

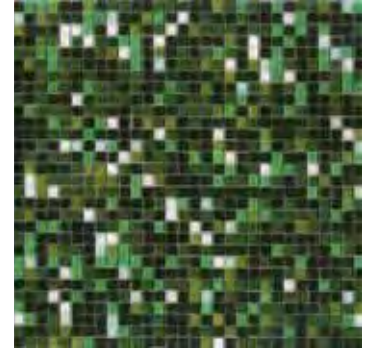
- |         |         |                |
|---------|---------|----------------|
| VG.0401 | VG.0419 | Neutro CX.S000 |
| VG.0414 | VG.0427 | Neve CX.S001   |
| VG.0428 | VG.0420 |                |
| VG.0426 | VG.0421 |                |



VE.0561 Muschio G Mix 4

P 270 MQ

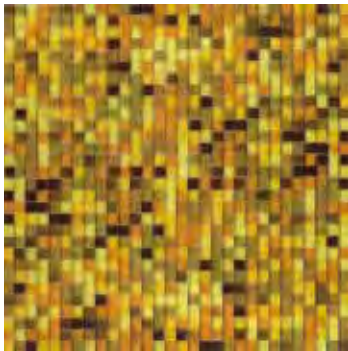
- |         |         |                |
|---------|---------|----------------|
| VG.0401 | VG.0427 | Neutro CX.S000 |
| VG.0414 | VG.0423 | Giada CX.S006  |
| VG.0428 | VG.0420 |                |
| VG.0426 | VG.0421 |                |
| VG.0419 |         |                |



VE.0562 Muschio G Mix 7

P 270 MQ

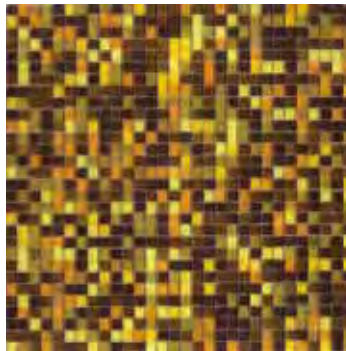
- |         |         |                |
|---------|---------|----------------|
| VG.0401 | VG.0423 | Neutro CX.S000 |
| VG.0414 | VG.0420 | Marina CX.S010 |
| VG.0419 | VG.0421 |                |



VE.0557 Ambra G Mix 1

P 270 MQ

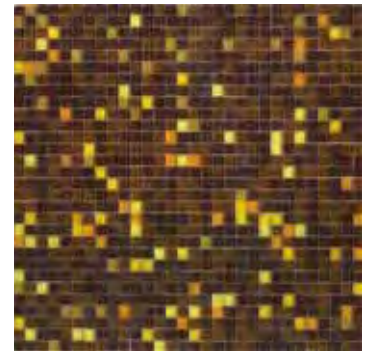
- |         |         |                |
|---------|---------|----------------|
| VG.0465 | VG.0467 | Neutro CX.S000 |
| VG.0463 | VG.0468 | Senape CX.S022 |
| VG.0462 | VG.0469 |                |
| VG.0466 | VG.0470 |                |



VE.0558 Ambra G Mix 4

P 270 MQ

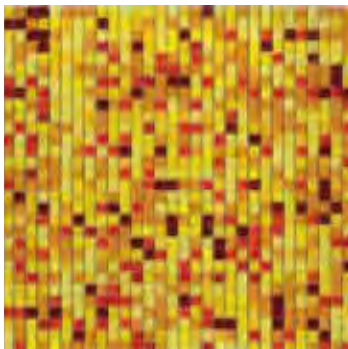
- |         |         |                |
|---------|---------|----------------|
| VG.0465 | VG.0467 | Neutro CX.S000 |
| VG.0463 | VG.0468 | Senape CX.S022 |
| VG.0462 | VG.0469 |                |
| VG.0466 | VG.0470 |                |



VE.0559 Ambra G Mix 7

P 270 MQ

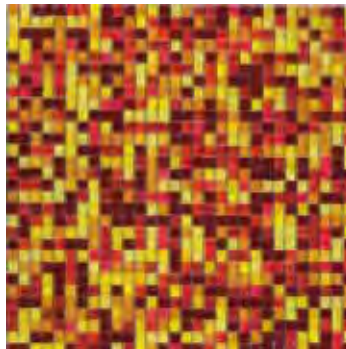
- |         |         |                  |
|---------|---------|------------------|
| VG.0465 | VG.0467 | Neutro CX.S000   |
| VG.0463 | VG.0469 | Fondente CX.S013 |
| VG.0462 | VG.0470 |                  |
| VG.0466 |         |                  |



VE.0575 Sole G Mix 1

P 270 MQ

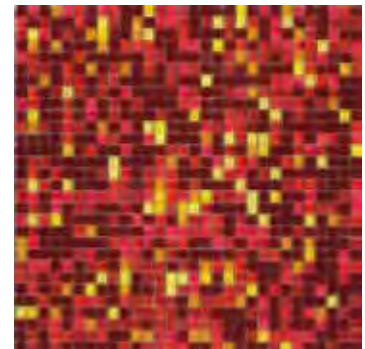
- |         |         |                |
|---------|---------|----------------|
| VG.0465 | VG.0461 | Neutro CX.S000 |
| VG.0464 | VG.0460 | Miele CX.S021  |
| VG.0463 | VG.0458 |                |
| VG.0462 | VG.0457 |                |



VE.0576 Sole G Mix 4

P 270 MQ

- |         |         |                   |
|---------|---------|-------------------|
| VG.0465 | VG.0460 | Neutro CX.S000    |
| VG.0464 | VG.0459 | Veneziano CX.S020 |
| VG.0463 | VG.0458 |                   |
| VG.0462 | VG.0457 |                   |
| VG.0461 |         |                   |

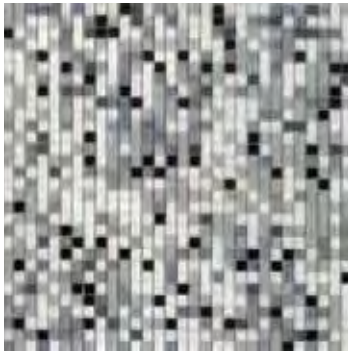


VE.0577 Sole G Mix 7

P 270 MQ

- |         |         |                 |
|---------|---------|-----------------|
| VG.0465 | VG.0459 | Neutro CX.S000  |
| VG.0464 | VG.0458 | Mattone CX.S024 |
| VG.0463 | VG.0457 |                 |
| VG.0462 |         |                 |
| VG.0461 |         |                 |

mix lucidi / glossy mix



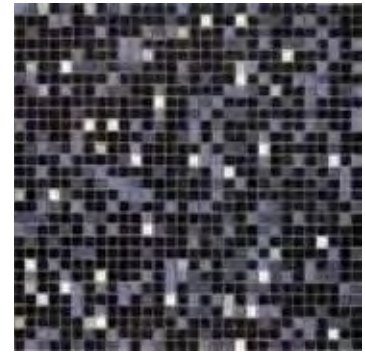
VE.0542 Acciaio G Mix 1 P 270 MQ

- |         |         |                 |
|---------|---------|-----------------|
| VG.0410 | VG.0405 | Neutro CX.S000  |
| VG.0411 | VG.0407 | Argento CX.S002 |
| VG.0412 | VG.0408 |                 |
| VG.0401 | VG.0409 |                 |
| VG.0406 |         |                 |



VE.0543 Acciaio G Mix 4 P 270 MQ

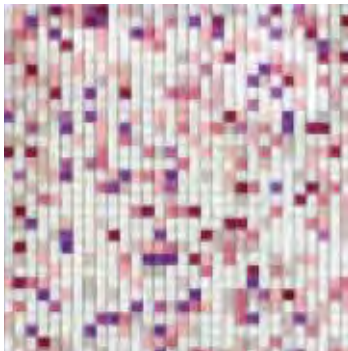
- |         |         |                |
|---------|---------|----------------|
| VG.0410 | VG.0405 | Neutro CX.S000 |
| VG.0411 | VG.0407 | Grigio CX.S003 |
| VG.0412 | VG.0408 |                |
| VG.0401 | VG.0409 |                |



VE.0544 Acciaio G Mix 7 P 270 MQ

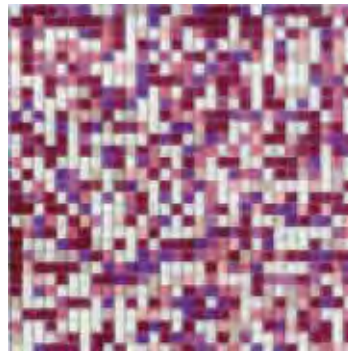
- |         |         |                |
|---------|---------|----------------|
| VG.0412 | VG.0407 | Neutro CX.S000 |
| VG.0401 | VG.0408 | Nero CX.S004   |
| VG.0405 | VG.0409 |                |

mix opachi / matt mix



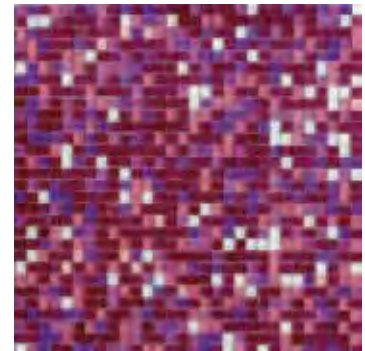
VE.0548 Orchidea M Mix 1 P 270 MQ

- |         |         |
|---------|---------|
| VM.0473 | VM.0495 |
| VM.0474 | VM.0500 |
| VM.0498 | VM.0496 |
| VM.0499 |         |



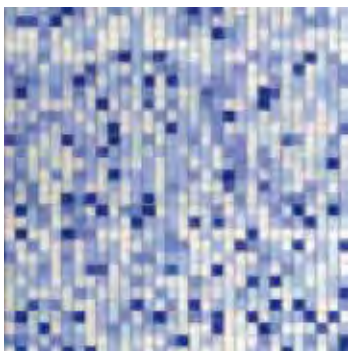
VE.0549 Orchidea M Mix 4 P 270 MQ

- |         |         |
|---------|---------|
| VM.0473 | VM.0495 |
| VM.0474 | VM.0500 |
| VM.0498 | VM.0496 |
| VM.0499 |         |



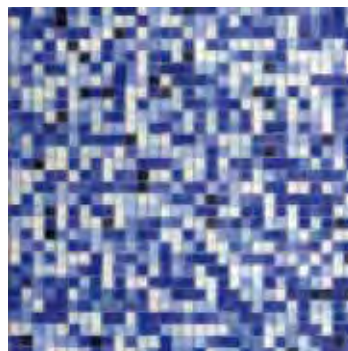
VE.0550 Orchidea M Mix 7 P 270 MQ

- |         |         |
|---------|---------|
| VM.0473 | VM.0495 |
| VM.0498 | VM.0500 |
| VM.0499 | VM.0496 |



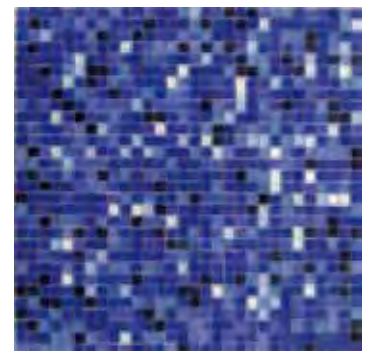
VE.0554 Cobalto M Mix 1 P 270 MQ

- |         |         |
|---------|---------|
| VM.0473 | VM.0490 |
| VM.0479 | VM.0492 |
| VM.0487 | VM.0493 |



VE.0555 Cobalto M Mix 4 P 270 MQ

- |         |         |
|---------|---------|
| VM.0473 | VM.0491 |
| VM.0479 | VM.0492 |
| VM.0487 | VM.0493 |
| VM.0488 | VM.0489 |
| VM.0490 |         |

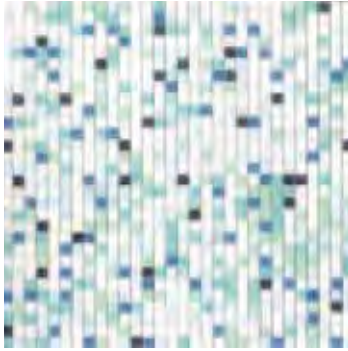


VE.0556 Cobalto M Mix 7 P 270 MQ

- |         |         |
|---------|---------|
| VM.0473 | VM.0491 |
| VM.0479 | VM.0492 |
| VM.0487 | VM.0493 |
| VM.0488 | VM.0489 |

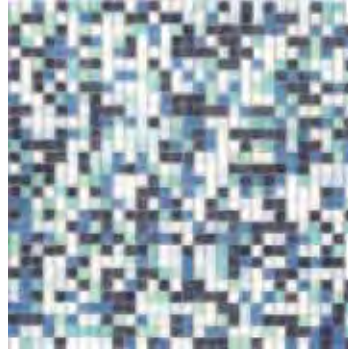
# vetrinamosaici

## mix opachi / matt mix



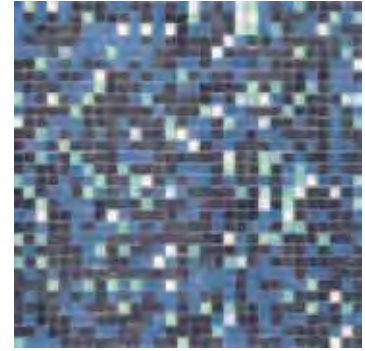
VE.0578 Smeraldo M Mix 1 P 270 MQ

- |         |         |
|---------|---------|
| VM.0473 | VM.0482 |
| VM.0479 | VM.0486 |
| VM.0481 | VM.0489 |



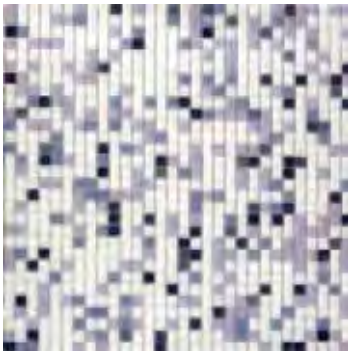
VE.0579 Smeraldo M Mix 4 P 270 MQ

- |         |         |
|---------|---------|
| VM.0473 | VM.0482 |
| VM.0479 | VM.0486 |
| VM.0481 | VM.0489 |



VE.0580 Smeraldo M Mix 7 P 270 MQ

- |         |         |
|---------|---------|
| VM.0473 | VM.0482 |
| VM.0479 | VM.0486 |
| VM.0481 | VM.0489 |



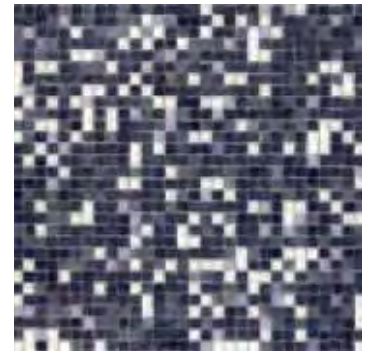
VE.0545 Cenere M Mix 1 P 270 MQ

- |         |         |
|---------|---------|
| VM.0473 | VM.0476 |
| VM.0475 | VM.0489 |
| VM.0477 |         |



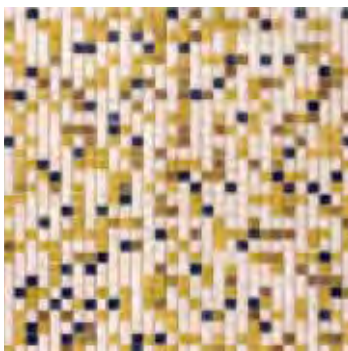
VE.0546 Cenere M Mix 4 P 270 MQ

- |         |         |
|---------|---------|
| VM.0473 | VM.0476 |
| VM.0475 | VM.0489 |
| VM.0477 |         |



VE.0547 Cenere M Mix 7 P 270 MQ

- |         |         |
|---------|---------|
| VM.0473 | VM.0476 |
| VM.0475 | VM.0489 |
| VM.0477 |         |



VE.0572 Senape M Mix 1 P 270 MQ

- |         |         |
|---------|---------|
| VM.0474 | VM.0502 |
| VM.0489 | VM.0503 |
| VM.0501 | VM.0504 |



VE.0573 Senape M Mix 4 P 270 MQ

- |         |         |
|---------|---------|
| VM.0474 | VM.0502 |
| VM.0489 | VM.0503 |
| VM.0501 | VM.0504 |



VE.0574 Senape M Mix 7 P 270 MQ

- |         |         |
|---------|---------|
| VM.0474 | VM.0502 |
| VM.0489 | VM.0503 |
| VM.0501 | VM.0504 |

mix misti / combo mix



VE.0566 Biancoargento C Mix 1 P 270 MQ

- VM.0473
- VG.0401
- VG.0471



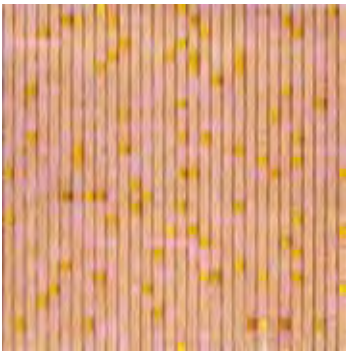
VE.0567 Biancoargento C Mix 4 P 270 MQ

- VM.0473
- VG.0401
- VG.0471



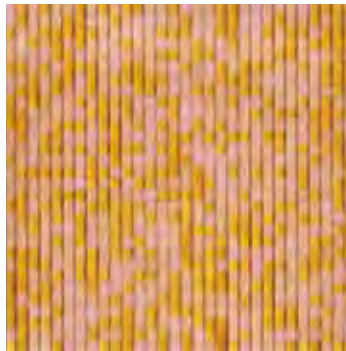
VE.0568 Biancoargento C Mix 7 P 270 MQ

- VM.0473
- VG.0401
- VG.0471



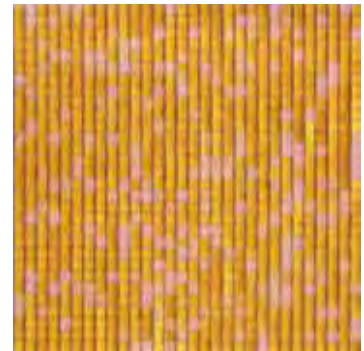
VE.0563 Rosaoro C Mix 1 P 270 MQ

- VM.0498
- VG.0453
- VG.0472



VE.0564 Rosaoro C Mix 4 P 270 MQ

- VM.0498
- VG.0453
- VG.0472



VE.0565 Rosaoro C Mix 7 P 270 MQ

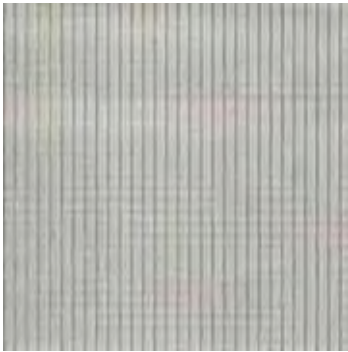
- VM.0498
- VG.0453
- VG.0472

+ 110



VG.0461 P Orange 021  
VG.0407 P Process Black

colori lucidi / glossy colours



VG.0401 Bianco P 250 MQ

Neutro CX.S000   
 Neve CX.S001



VG.0402 P 5245 P 250 MQ

Neutro CX.S000   
 Neve CX.S001



VG.0403 P 420 P 250 MQ

Neutro CX.S000   
 Neve CX.S001



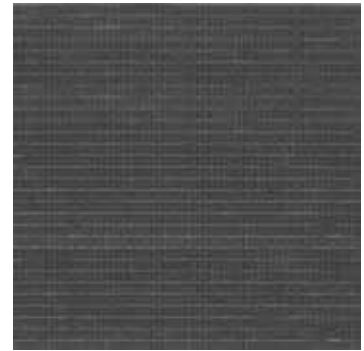
VG.0404 P 5305 P 250 MQ

Neutro CX.S000   
 Argento CX.S002



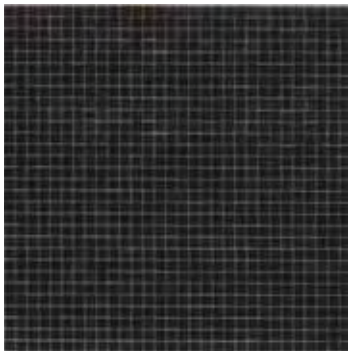
VG.0405 P Cool Gray 7 P 250 MQ

Neutro CX.S000   
 Grigio CX.S003



VG.0406 P 424 P 250 MQ

Neutro CX.S000   
 Grigio CX.S003



VG.0407 P Process Black P 250 MQ

Neutro CX.S000   
 Nero CX.S004



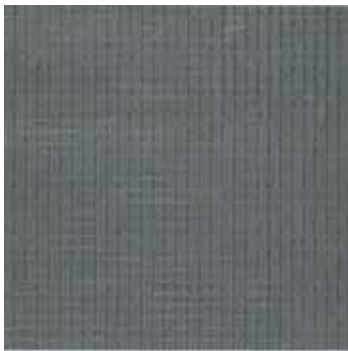
VG.0408 P 425 P 250 MQ

Neutro CX.S000   
 Grigio CX.S003



VG.0409 P 535 P 250 MQ

Neutro CX.S000   
 Grigio CX.S003



VG.0410 P 5497 P 250 MQ

Neutro CX.S000   
 Grigioverde CX.S005



VG.0411 P Cool Gray 6 P 250 MQ

Neutro CX.S000   
 Grigio CX.S003

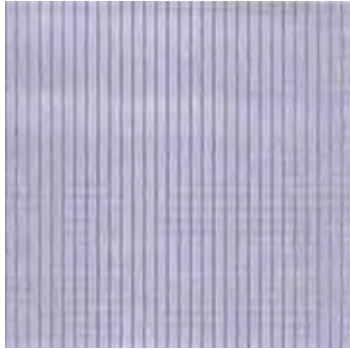


VG.0412 P Cool Gray 4 P 250 MQ

Neutro CX.S000   
 Grigioverde CX.S005

vetrinamosaici

colori lucidi / glossy colours



VG.0413 P 642

P 250 MQ

Neutro CX.S000   
Grigioverde CX.S005



VG.0414 P 552

P 250 MQ

Neutro CX.S000   
Menta CX.S008



VG.0415 P 557

P 250 MQ

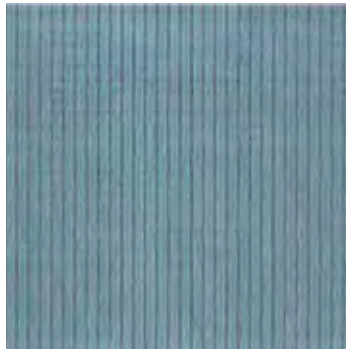
Neutro CX.S000   
Giada CX.S006



VG.0416 P 565

P 250 MQ

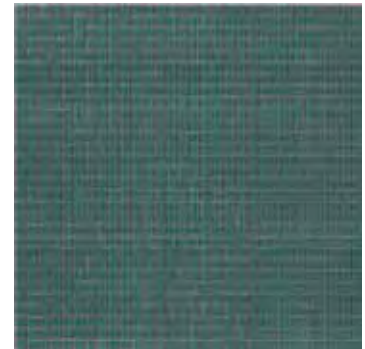
Neutro CX.S000   
Menta CX.S008



VG.0417 P 7472

P 250 MQ

Neutro CX.S000   
Menta CX.S008



VG.0418 P 335

P 250 MQ

Neutro CX.S000   
Turchese CX.S009



VG.0419 P 7481

P 250 MQ

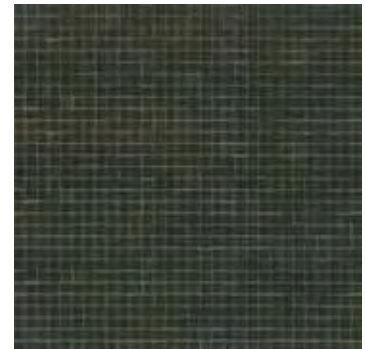
Neutro CX.S000   
Giada CX.S006



VG.0420 P 356

P 250 MQ

Neutro CX.S000   
Marina CX.S010



VG.0421 P 3435

P 250 MQ

Neutro CX.S000   
Marina CX.S010



VG.0422 P 370

P 250 MQ

Neutro CX.S000   
Giada CX.S006



VG.0423 P 7491

P 250 MQ

Neutro CX.S000   
Giada CX.S006



VG.0424 P 377

P 250 MQ

Neutro CX.S000   
Giada CX.S006

colori lucidi / glossy colours



VG.0425 P 105

P 250 MQ

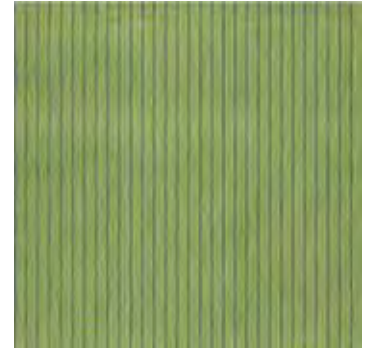
Neutro CX.S000   
Oliva CX.S023



VG.0426 P 583

P 250 MQ

Neutro CX.S000   
Grigioverde CX.S005



VG.0427 P 366

P 250 MQ

Neutro CX.S000   
Giada CX.S006



VG.0428 P 375

P 250 MQ

Neutro CX.S000   
Giada CX.S006



VG.0429 P 633

P 250 MQ

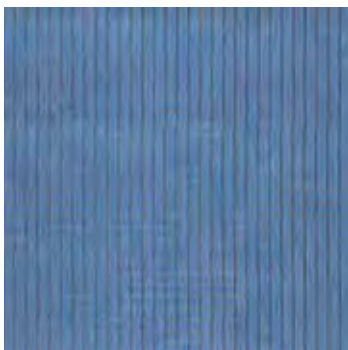
Neutro CX.S000   
Turchese CX.S009



VG.0430 P 639

P 250 MQ

Neutro CX.S000   
Neve CX.S001



VG.0431 P 638

P 250 MQ

Neutro CX.S000   
Neve CX.S001



VG.0432 P 310

P 250 MQ

Neutro CX.S000   
Neve CX.S001



VG.0433 P 311

P 250 MQ

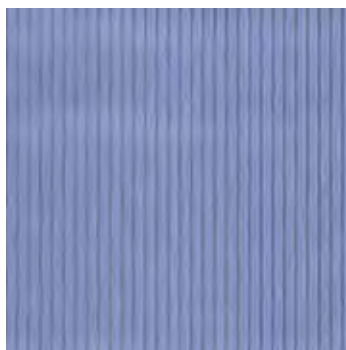
Neutro CX.S000   
Neve CX.S001



VG.0434 P 543

P 250 MQ

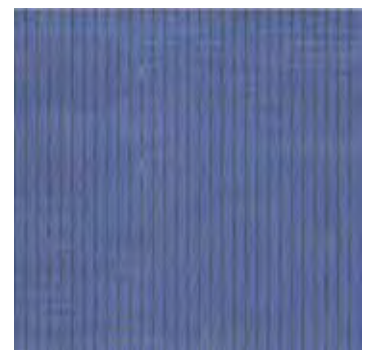
Neutro CX.S000   
Avio CX.S011



VG.0435 P 658

P 250 MQ

Neutro CX.S000   
Neve CX.S001



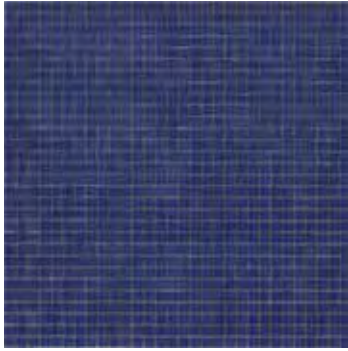
VG.0436 P 542

P 250 MQ

Neutro CX.S000   
Avio CX.S011

vetrinamosaici

colori lucidi / glossy colours



VG.0437 P 647

P 250 MQ

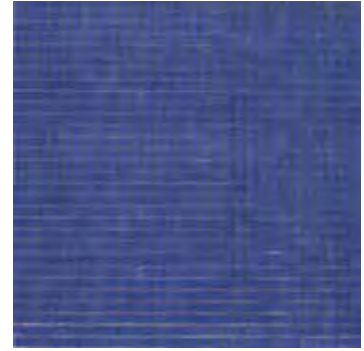
Neutro CX.S000   
Cobalto CX.S012



VG.0438 P 2767

P 250 MQ

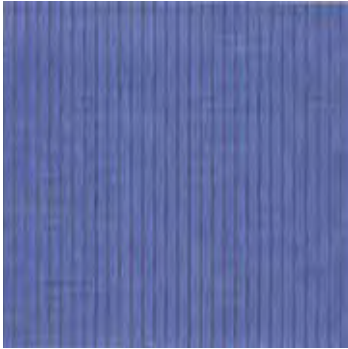
Neutro CX.S000   
Oceano CX.S025



VG.0439 P 2935

P 250 MQ

Neutro CX.S000   
Cobalto CX.S012



VG.0440 P 659

P 250 MQ

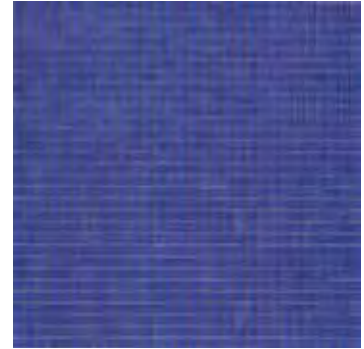
Neutro CX.S000   
Avio CX.S011



VG.0441 P 279

P 250 MQ

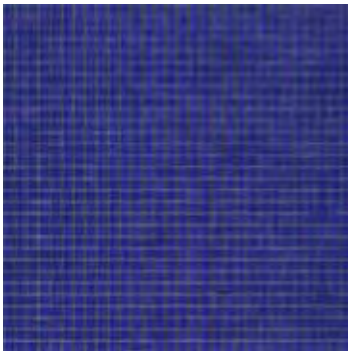
Neutro CX.S000   
Avio CX.S011



VG.0442 P 2726

P 250 MQ

Neutro CX.S000   
Cobalto CX.S012



VG.0443 P 2746

P 250 MQ

Neutro CX.S000   
Oceano CX.S025



VG.0444 P 272

P 250 MQ

Neutro CX.S000   
Lilla CX.S017



VG.0445 P 257

P 250 MQ

Neutro CX.S000   
Lilla CX.S017



VG.0446 P 7442

P 250 MQ

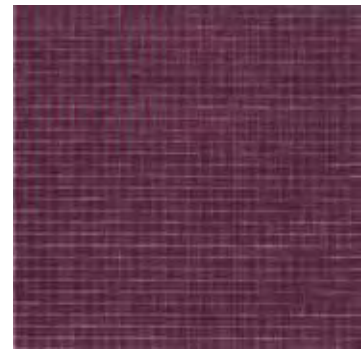
Neutro CX.S000   
Lilla CX.S017



VG.0447 P 255

P 250 MQ

Neutro CX.S000   
Lilla CX.S017



VG.0448 P 235

P 250 MQ

Neutro CX.S000   
Viola CX.S018

colori lucidi / glossy colours



VG.0449 P 7524

P 250 MQ

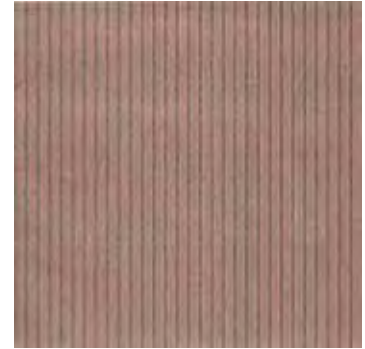
Neutro CX.S000   
Terracotta CX.S014



VG.0450 P 7511

P 250 MQ

Neutro CX.S000   
Sabbia CX.S015



VG.0451 P 7521

P 250 MQ

Neutro CX.S000   
Sabbia CX.S015



VG.0452 P 488

P 250 MQ

Neutro CX.S000   
Sabbia CX.S015



VG.0453 P 489

P 250 MQ

Neutro CX.S000   
Sabbia CX.S015



VG.0454 P 196

P 250 MQ

Neutro CX.S000   
Rosa CX.S016



VG.0455 P 203

P 250 MQ

Neutro CX.S000   
Rosa CX.S016



VG.0456 P 2573

P 250 MQ

Neutro CX.S000   
Lilla CX.S017



VG.0457 P 207

P 250 MQ

Neutro CX.S000   
Carminio CX.S019



VG.0458 P 193

P 250 MQ

Neutro CX.S000   
Mattone CX.S024



VG.0459 P 185

P 250 MQ

Neutro CX.S000   
Neve CX.S001



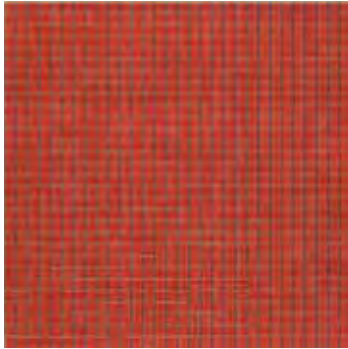
VG.0460 P 032

P 250 MQ

Neutro CX.S000   
Veneziano CX.S020

vetrinamosaici

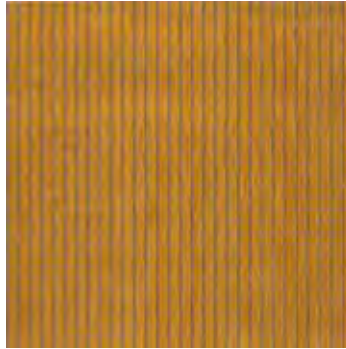
colori lucidi / glossy colours



VG.0461 P Orange 021

P 250 MQ

Neutro CX.S000   
Veneziano CX.S020



VG.0462 P 143

P 250 MQ

Neutro CX.S000   
Miele CX.S021



VG.0463 P 116

P 250 MQ

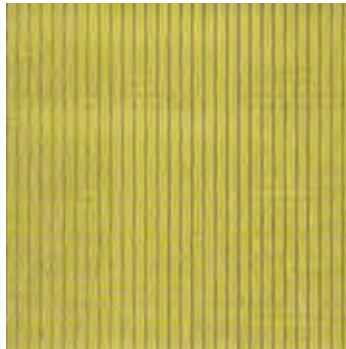
Neutro CX.S000   
Miele CX.S021



VG.0464 P Yellow

P 250 MQ

Neutro CX.S000   
Miele CX.S021



VG.0465 P 101

P 250 MQ

Neutro CX.S000   
Neve CX.S001



VG.0466 P 104

P 250 MQ

Neutro CX.S000   
Senape CX.S022



VG.0467 P 110

P 250 MQ

Neutro CX.S000   
Senape CX.S022



VG.0468 P 126

P 250 MQ

Neutro CX.S000   
Senape CX.S022



VG.0469 P 7505

P 250 MQ

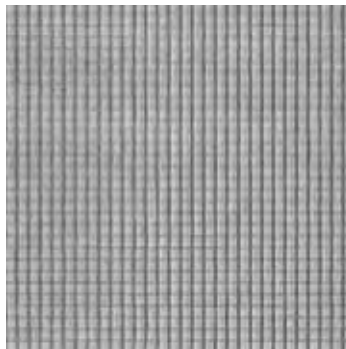
Neutro CX.S000   
Fondente CX.S013



VG.0470 P 1545

P 250 MQ

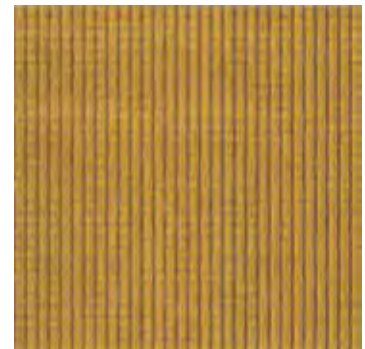
Neutro CX.S000   
Fondente CX.S013



VG.0471 Argento

P 250 MQ

Neutro CX.S000   
Argento CX.S002



VG.0472 Oro

P 250 MQ

Neutro CX.S000

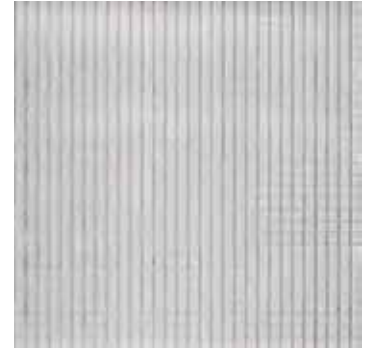
colori opachi / matt colours



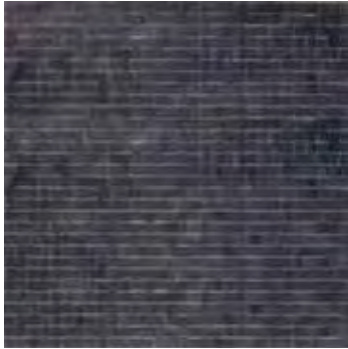
VM.0473 Bianco P 250 MQ



VM.0474 P 5245 P 250 MQ



VM.0475 P 5305 P 250 MQ



VM.0476 P 425 P 250 MQ



VM.0477 P 535 P 250 MQ



VM.0478 P 5497 P 250 MQ



VM.0479 P 642 P 250 MQ



VM.0480 P 557 P 250 MQ



VM.0481 P 565 P 250 MQ



VM.0482 P 7472 P 250 MQ



VM.0483 P 3435 P 250 MQ



VM.0484 P 377 P 250 MQ

vetrinamosaici

colori opachi / matt colours



VM.0485 P 583

P 250 MQ



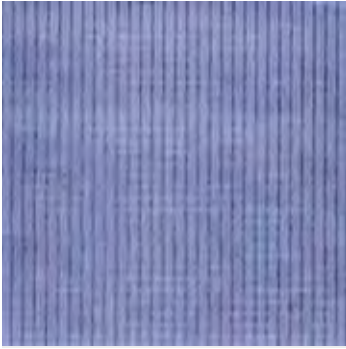
VM.0486 P 633

P 250 MQ



VM.0487 P 658

P 250 MQ



VM.0488 P 646

P 250 MQ



VM.0489 P 2767

P 250 MQ



VM.0490 P 659

P 250 MQ

+ 118



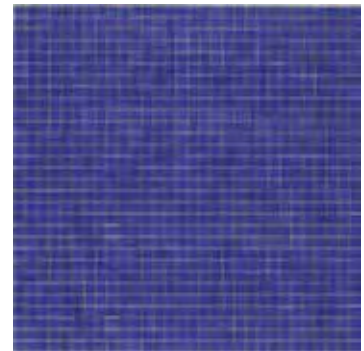
VM.0491 P 279

P 250 MQ



VM.0492 P 2726

P 250 MQ



VM.0493 P 2746

P 250 MQ



VM.0494 P 272

P 250 MQ



VM.0495 P 7445

P 250 MQ



VM.0496 P 216

P 250 MQ

colori opachi / matt colours



VM.0497 P 7511

P 250 MQ



VM.0498 P 196

P 250 MQ



VM.0499 P 7524

P 250 MQ



VM.0500 P 2573

P 250 MQ



VM.0501 P 104

P 250 MQ



VM.0502 P 110

P 250 MQ



VM.0503 P 126

P 250 MQ

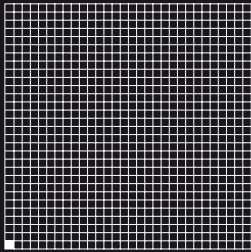


VM.0504 P 7505

P 250 MQ



+ 120



10x10x4 mm 3/8"x3/8"x7/16"  
327x327 mm 12<sup>3/4</sup>"x12<sup>3/4</sup>"

Mosaico di vetro, composto da tessere quadrate di spessore 4 mm, nel formato 10x10 mm, montate su rete in fibra di vetro a formare un foglio di dimensioni 327x327 mm in cui le tessere sono distanziate di circa 0,9 mm. Le sfumature e i mix sono composti da tessere della stessa collezione, in diverse percentuali e disposizione casuale.

Glass mosaic comprising square chips 4 mm thick, in size 10x10 mm, mounted on fiberglass to form a sheet of 327x327 mm in which the chips are about 0,9 mm apart. Shade and mix consist of chips from the same collection, in different percentages and with random arrangement.

Glasmosaik aus 4 mm starken, quadratischen Mosaiksteinen im Format 10x10 mm, die auf einem Glasfasernetz verklebt und in Bögen der Größe 327x327 mm erhältlich sind, auf denen sie einen Abstand von ca. 0,9 mm haben. Die Farbverläufe und Mischungen werden aus Mosaiksteinen der gleichen Kollektion in unterschiedlichen Anteilen und im Zufallsmuster zusammengestellt.

Mosaïque de verre composée de tesselles carrées 10x10 mm de 4 mm d'épaisseur sur filet en fibre de verre, pour une feuille de 327x327 mm avec un écart de 0,9 mm environ entre les tesselles. Les nuances et les mélanges reprennent les tesselles de la même collection à divers pourcentages et selon un dessin fortuit.

Mosaico de vidrio, constituido por teselas cuadradas de 4 mm de espesor, en el formato de 10 x 10 mm, montadas sobre red en fibra de vidrio formando una hoja de 327 x 327 mm en la que las teselas están separadas por juntas de unos 0,9 mm. Las Sfumature y los Mix están formados por teselas de la misma colección, en varios porcentajes y con una disposición aleatoria.

Стеклопанная мозаика из квадратных кусочков толщиной 4 мм формата 10x10 мм, наклеенных на сетку из стекловолокна и образующих листы размерами 327x327 мм, на которых кусочки расположены на расстоянии прибл. 0,9 мм друг от друга. Нюансы и Смеси состоят из кусочков из этой же коллекции в разных пропорциях и с случайным расположением.



Per la stuccatura dei fogli contenenti tessere opache (matt), si consiglia l'utilizzo di stucco cementizio.

Cement-based grout is recommended for grouting sheets comprising matt chips.

Zum Verfugen der Bögen, die Mosaiksteine in Mattoptik enthalten, wird die Verwendung einer zementären Fugenmasse empfohlen.

Pour les feuilles avec tesselles mates, nous recommandons d'utiliser du ciment-joint.







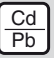
Para el estucado de las hojas que contienen teselas mates se aconseja el uso de estuco a base de cemento.

Для заделки швов в композициях из листов с матовыми кусочками (matt), рекомендуем использовать цементную затирку.

IMBALLI PACKAGING EMBALLAGES VERPACKUNGEN EMBALAJES УПАКОВКА

Misure / Tessera Chip / Size inches Tesselle / Format inches Mosaikstein / Format inches Tesela / Dimensiones inches Формат / Осколок inches	Misure / Foglio mm inches Sheet / Size inches Feuille / Format inches Blatt / Format inches Hoja / Dimensiones inches Формат / Лист inches	Fogli / Scatola Sheets / Box Feuilles / Boite Blätter / Karton Hojas / Caja Листы / Коробка	m <sup>2</sup> Sq ft / Scatola Sqm. Sq ft / Box Mc. Sq ft / Boite Om. Sq ft / Karton m <sup>2</sup> Sq ft / Caja m <sup>2</sup> Sq ft / Коробка	Kg lbs / Scatola Kg lbs / Box Kg lbs / Boite Kg lbs / Karton Kg lbs / Caja Kr lbs / Коробка	Scatole / Pallet Box / Pallet Boite / Palette Karton / Palette Caja / Pallet Коробки / паллетта	m <sup>2</sup> Sq ft / Pallet Sqm. Sq ft / Pallet Mc. Sq ft / Palette Om. Sq ft / Palette m <sup>2</sup> Sq ft / Pallet m <sup>2</sup> Sq ft / паллетта	Kg lbs / Pallet Kg lbs / Pallet Kg lbs / Palette Kg lbs / Palette Kg lbs / Palette Kr lbs / паллетта
10x10x4 mm 3/8"x3/8"x7/16"	327x327x4 mm 12 <sup>3/4</sup> "x 12 <sup>3/4</sup> "x 7/16"	10	1,07 11,52	~ 7,60 16,75	162	173,34 1.865,82	~ 1231,00 2713,89
sfumature / shade 10x10x4 mm 3/8"x3/8"x7/16"	327x327x4 mm 12 <sup>3/4</sup> "x 12 <sup>3/4</sup> "x 7/16"	7	0,749 8,06	6,4 14,11	198	121,34 1.306,09	~ 861,70 1.899,69
mix 10x10x4 mm 3/8"x3/8"x7/16"	327x327x4 mm 12 <sup>3/4</sup> "x 12 <sup>3/4</sup> "x 7/16"	10	1,07 11,52	~ 9,0 19,84	135	173,34 1.865,82	~ 1231,00 2713,89

CARATTERISTICHE TECNICHE TECHNICAL CHARACTERISTICS CARACTERISTIQUES TECHNIQUE TECHNISCHE EIGENSCHAFTEN DATOS TECNICOS ТЕХНИЧЕСКИЕ ХАРАКТЕРИСТИКИ

 Assorbimento d'acqua Water absorption Absorption d'eau Wasser Aufnahme Absorción de agua впитывание воды (UNI EN ISO 10545/3)	 Resistenza al gelo Frost resistance Résistance au gel Frostbeständigkeit Resistencia al hielo морозостойчивость (UNI EN ISO 10545/12)	 Resistenza agli sbalzi termici Resistance to thermal shock Résistance aux chocs thermiques Temperaturwechselbeständigkeit Resistencia a los cambios de temperatura устойчивость к перепадам температуры (UNI EN ISO 10545/9)	 Resistenza agli attacchi chimici Resistance to chemical attacks Résistance aux produits chimiques Säure- und Laugenbeständigkeit Resistencia a los agentes químicos устойчивость к химикатам (UNI EN ISO 10545/13)	 Resistenza alle macchie Resistance to staining Résistance aux produits tachants Beständigkeit gegen Fleckenbildner Resistencia a las manchas устойчивость к образованию пятен (UNI EN ISO 10545/14)	 Resistenza dei colori alla luce Colours resistance to fading Résistance des couleurs à la lumière Farbbeständigkeit Resistencia de los colores a la luz устойчивость к выцветанию красок (DIN 51094)	 Ricerca di piombo e cadmio Lead and cadmium research Recherche de plomb et cadmium Suche nach Blei und Cadmium Búsqueda de plomo y cadmio исследование на наличие свинца и кадмия (UNI EN ISO 10545/15)
N	R	R	R	R	R	A

N = nullo / none / nulle / null / nula / нулевой R = resistente / resistant / résistant / beständig / resistente / устойчивый A = assente / absent / sans / nicht vorhanden / ausente / отсутствует